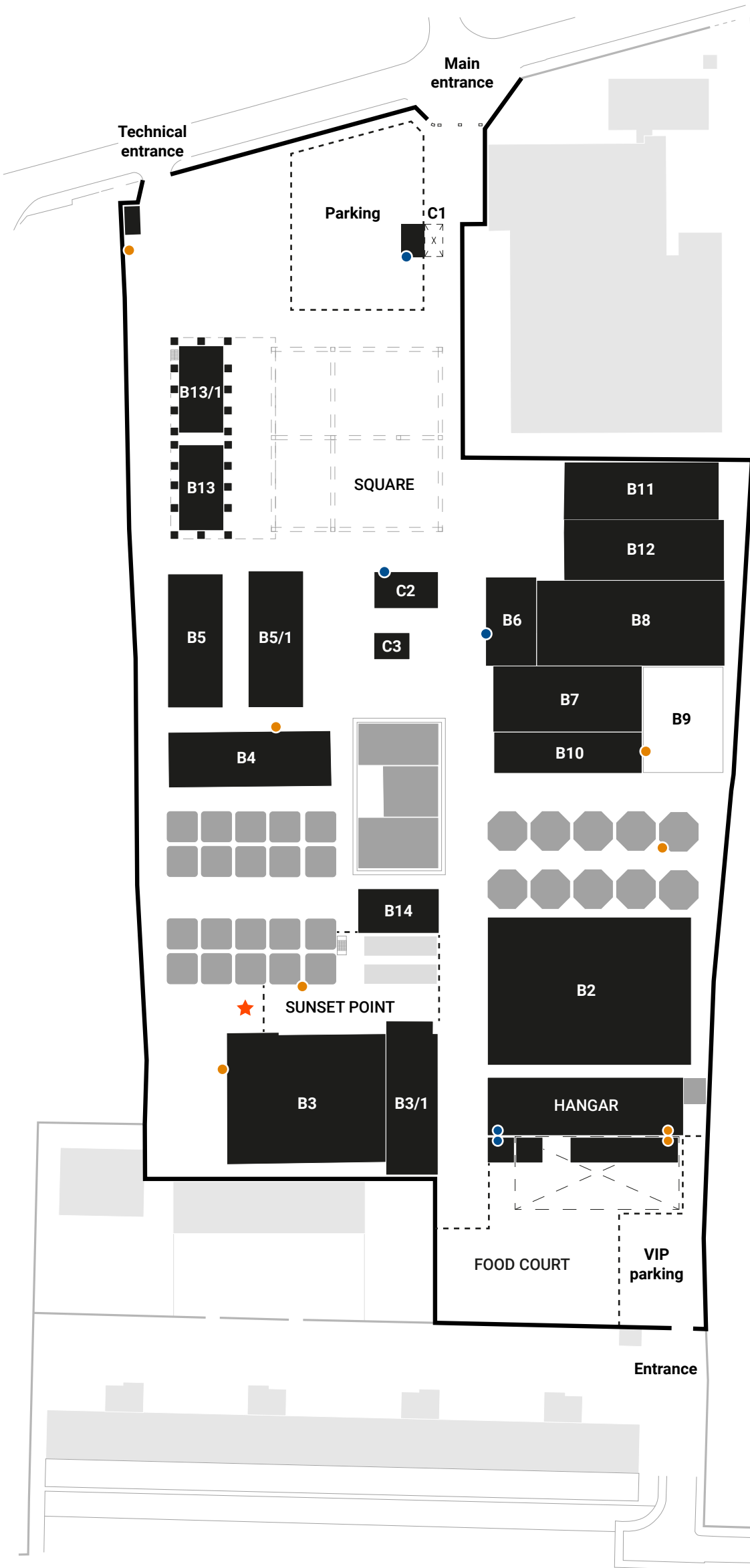
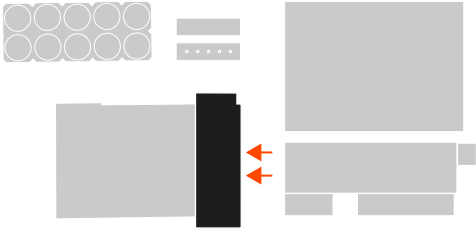


#ffffff



LEGEND

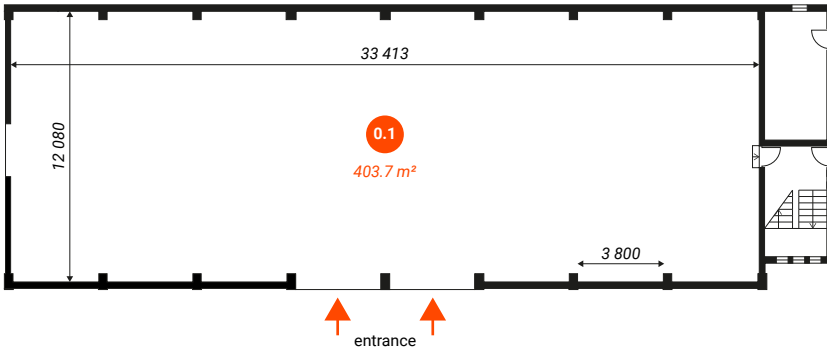
- Distribution board
- Water and sewerage
- ★ Installation art
- ! Under the terms of the lease, it is strictly prohibited to cut down or damage any vegetation present on the property



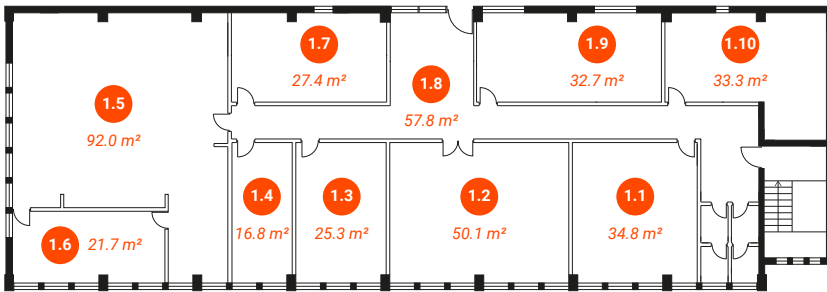
B3/1

3-storey building requiring reconstruction. There are several separate rooms on the 1st and 2nd Floor. The Ground Floor is a space without windows, doors, flooring and communications.

GROUND FLOOR

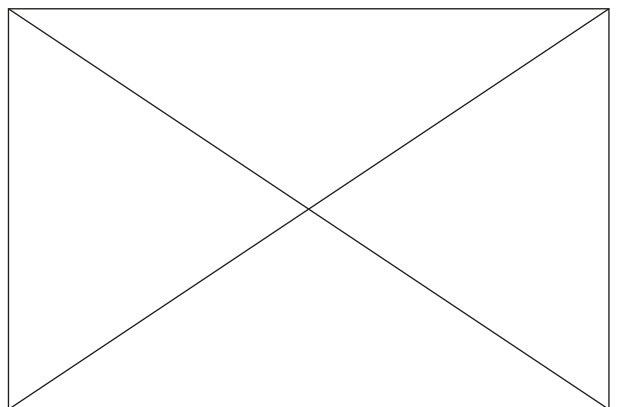
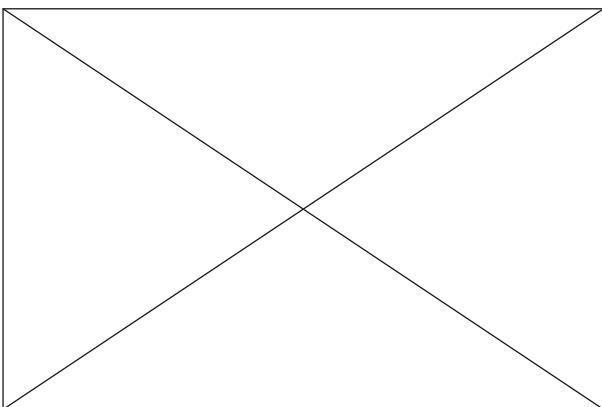


1 FLOOR

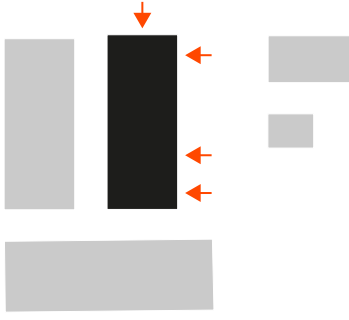


NOTES

- Area: 850 m²
- Water/Sewerage: no
- Electrics: no
- Restrooms: yes
- Number of storeys: 2
- Number of rooms: 11
- Multipurpose flat roof: no
- Inside/outside condition: requires capital repairs
- Lease start: September 2023

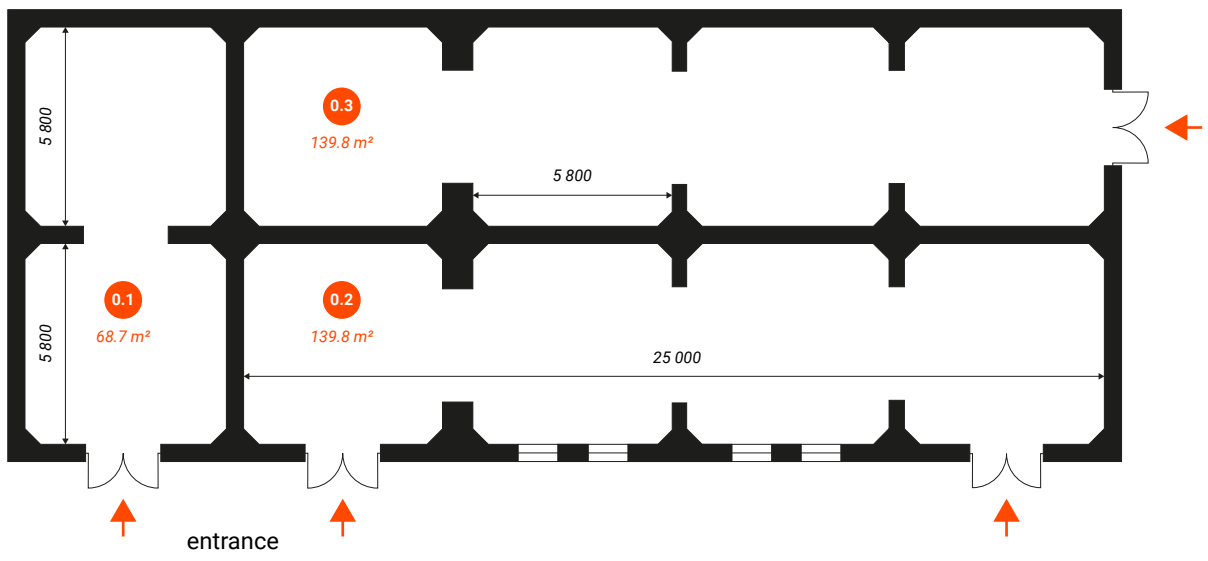


B5/1



This building has a unique history as a former barrel warehouse. The previous owner transformed it by adding new doors and windows, giving it a distinct character. Although the building looks like a solid concrete structure, it is a versatile space that can be adapted to your needs. Explore the potential of this space for your business.

GROUND FLOOR



NOTES

Area: 349 m²

Water/Sewerage: no

Electrics: no

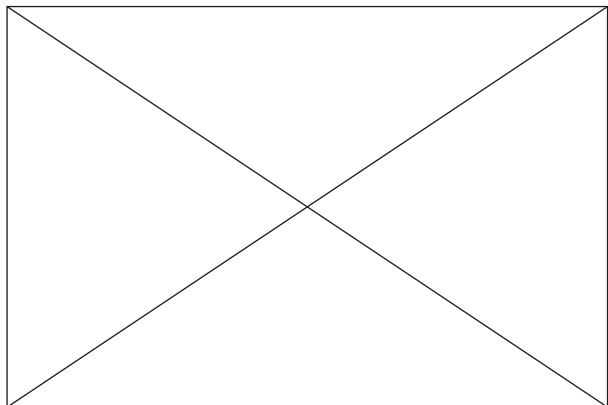
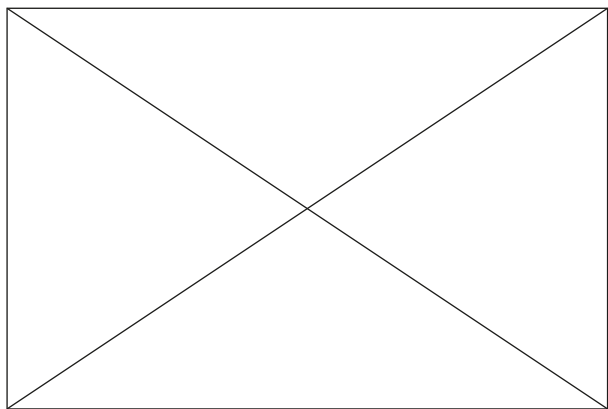
Restrooms: no

Number of storeys: 1

Number of rooms: 3

Multipurpose flat roof: no

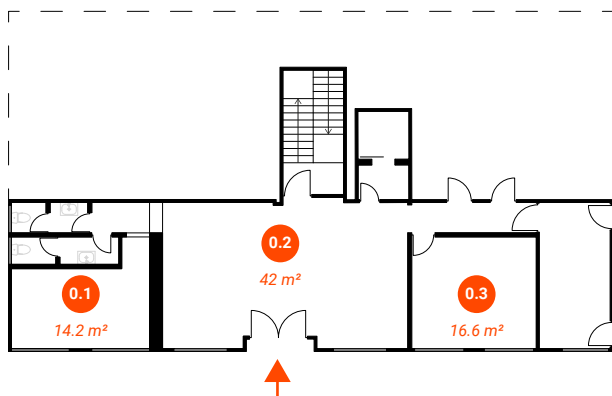
Inside/outside condition:
requires capital repairs



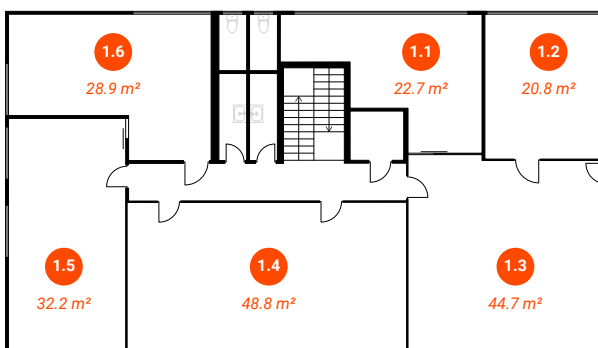
B6

Discover the potential of this four-story building, once used as an office center. With numerous spacious rooms on each floor, this versatile building offers a multitude of options to meet your business needs. Whether you need a corporate headquarters, workspace or creative studio, this building provides the flexibility and convenience you need.

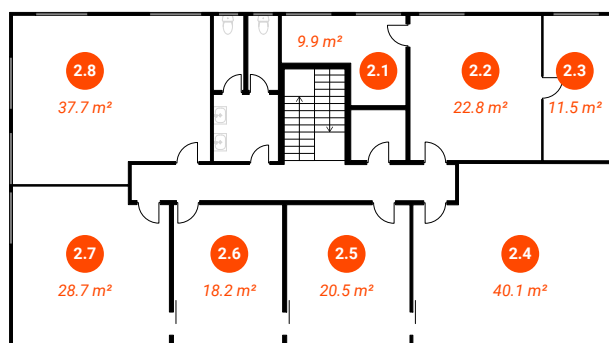
GROUND FLOOR



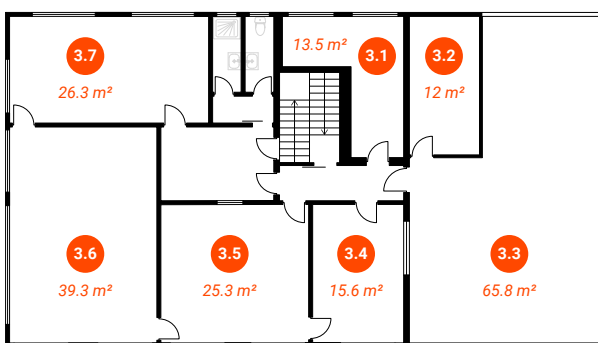
1 FLOOR



2 FLOOR



3 FLOOR



NOTES

Area: 800 m²

Water/Sewerage: yes

Electrics: yes

Restrooms: yes

Number of storeys: 4

Number of rooms: 24

Multipurpose flat roof: sundeck

Lease start: October 2023

Inside/outside condition:

requires capital repairs

